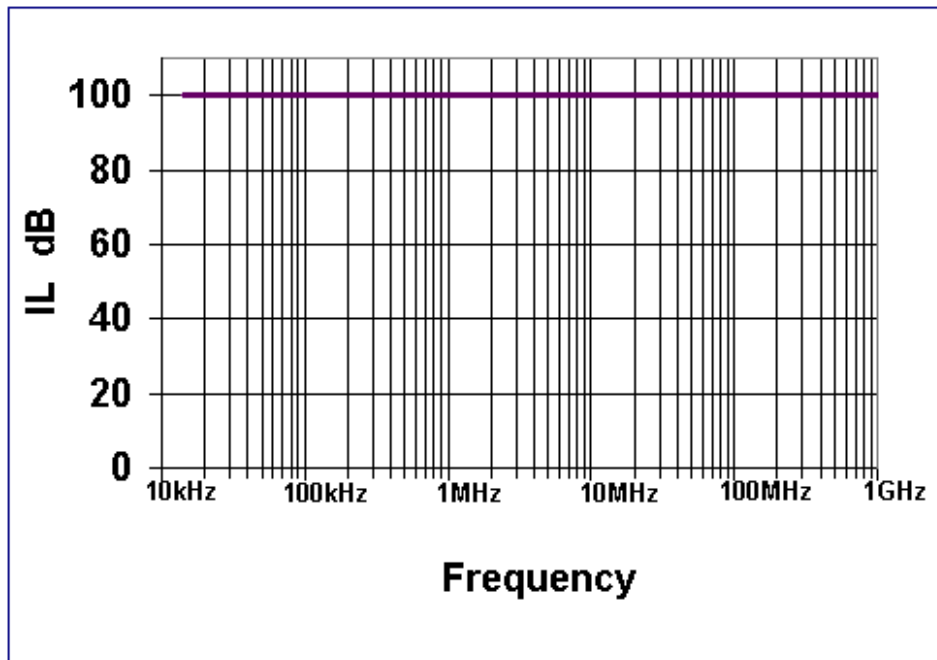
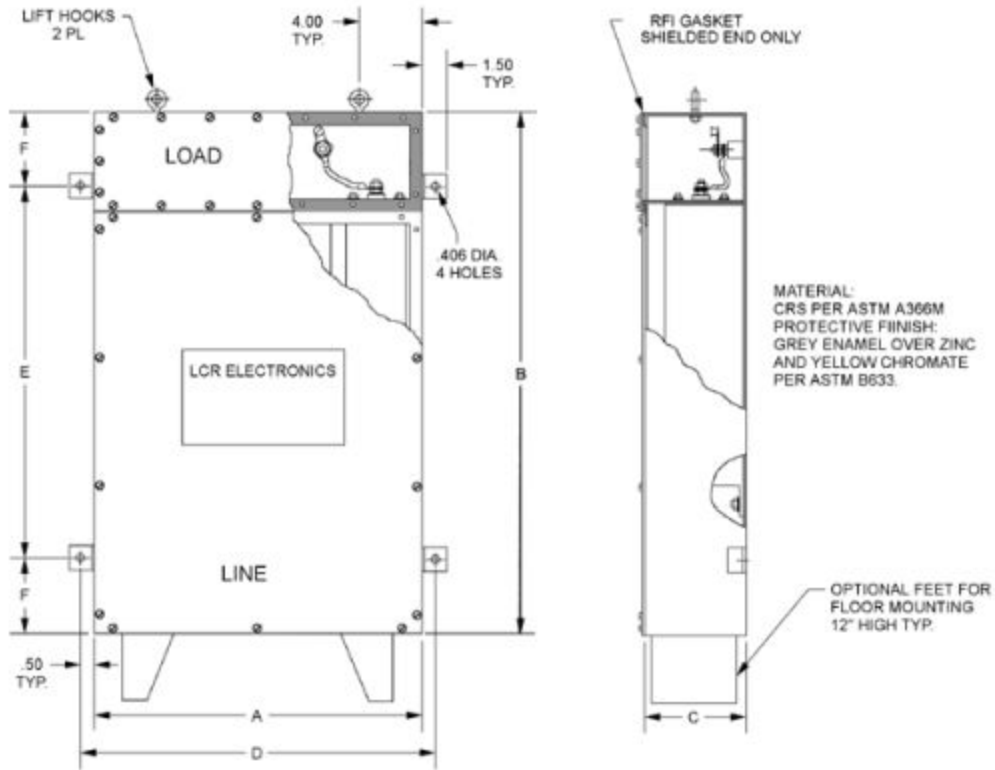


F1960 series High Performance Power Line Filters

Insertion Loss per MIL-STD-220



Filter Cabinet Specifications & Mechanical Dimensions

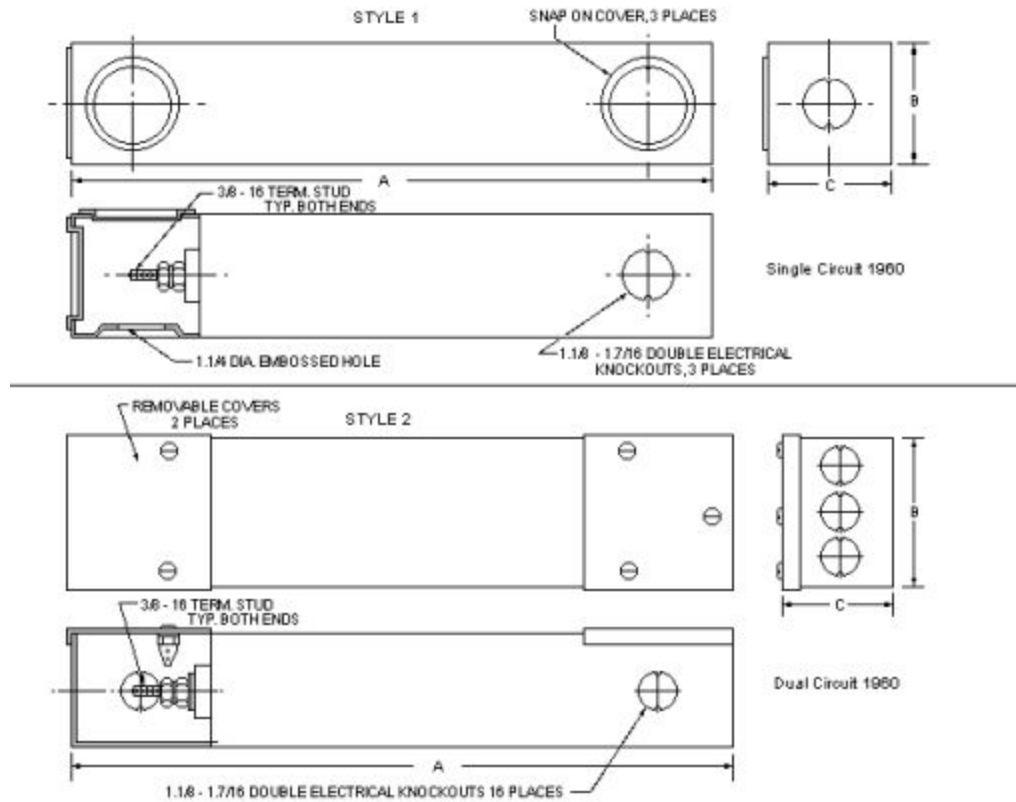


Part No.	Current Amps	Voltage		Freq. Hz	Dimensions inch			
		AC	DC		A	B	C	D
F1960-1WN	20	277	600	0-400	9.63	26.50	4.44	10.63
F1960-2W	2 x 20	277	600	0-400	10.38	26.50	4.44	11.38
F1960-2WN	2 x 20	277	600	0-400	14.25	26.50	4.44	15.25
F1960-3W	3 x 20	277	600	0-400	15.00	26.50	4.44	16.00
F1960-3WN	3 x 20	277	600	0-400	18.88	26.50	4.44	19.88
F1960-4W	4 x 20	277	600	0-400	19.63	26.50	4.44	20.63
F1961-1WN	30	277	600	0-400	9.63	28.00	4.44	10.63
F1961-2W	2 x 30	277	600	0-400	10.38	28.00	4.44	11.38
F1961-2WN	2 x 30	277	600	0-400	14.25	28.00	4.44	15.25
F1961-3W	3 x 30	277	600	0-400	15.00	28.00	4.44	16.00
F1961-3WN	3 x 30	277	600	0-400	18.88	28.00	4.44	19.88
F1961-4W	4 x 30	277	600	0-400	19.63	28.00	4.44	20.63

Part No.	Current Amps	Voltage		Freq. Hz	Dimensions ^{inch}			
		AC	DC		A	B	C	D
F1962-1WN	50	277	600	0-400	9.63	32.88	4.44	10.63
F1962-2W	2 x 50	277	600	0-400	10.38	32.88	4.44	11.38
F1962-2WN	2 x 50	277	600	0-400	14.25	32.88	4.44	15.25
F1962-3W	3 x 50	277	600	0-400	15.00	32.88	4.44	16.00
F1962-3WN	3 x 50	277	600	0-400	18.88	32.88	4.44	19.88
F1962-4W	4 x 50	277	600	0-400	19.63	32.88	4.44	20.63
F1963-1WN	75	277	600	0-400	9.63	32.88	4.44	10.63
F1963-2W	2 x 75	277	600	0-400	10.38	32.88	4.44	11.38
F1963-2WN	2 x 75	277	600	0-400	14.25	32.88	4.44	15.25
F1963-3W	3 x 75	277	600	0-400	15.00	32.88	4.44	16.00
F1963-3WN	3 x 75	277	600	0-400	18.88	32.88	4.44	19.88
F1963-4W	4 x 75	277	600	0-400	19.63	32.88	4.44	20.63
F1964-1WN	100	277	600	0-400	9.81	35.25	4.44	10.81
F1964-2W	2 x 100	277	600	0-400	11.13	35.25	4.44	12.13
F1964-2WN	2 x 100	277	600	0-400	14.81	35.25	4.44	15.81
F1964-3W	3 x 100	277	600	0-400	16.13	35.25	4.44	17.13
F1964-3WN	3 x 100	277	600	0-400	19.81	35.25	4.44	20.81
F1964-4W	4 x 100	277	600	0-400	21.13	35.25	4.44	22.13
F1968-1WN	150	277	600	0-400	13.00	32.88	4.44	14.00
F1968-2W	2 x 150	277	600	0-400	17.00	32.88	4.44	18.00
F1968-2WN	2 x 150	277	600	0-400	21.00	32.88	4.44	22.00
F1968-3W	3 x 150	277	600	0-400	25.00	32.88	4.44	26.00
F1968-3WN	3 x 150	277	600	0-400	29.00	32.88	4.44	30.00
F1968-4W	4 x 150	277	600	0-400	33.00	32.88	4.44	34.00
F1969-1WN	200	277	600	0-400	13.75	35.25	4.44	14.75
F1969-2W	2 x 200	277	600	0-400	19.00	35.25	4.44	20.00
F1969-2WN	2 x 200	277	600	0-400	22.75	35.25	4.44	23.75
F1969-3W	3 x 200	277	600	0-400	28.00	35.25	4.44	29.00
F1969-3WN	3 x 200	277	600	0-400	31.75	35.25	4.44	32.75
F1969-4W	4 x 200	277	600	0-400	32.00	35.25	4.44	38.00

*** In addition to above, other configurations for your custom current and voltage requirements are also available upon request.**

F1960 Series High Performance Power Line Filter Inserts



Filter Insert Specifications & Mechanical Dimensions

Part No.	Current ^{MAX}	Voltage		Frequency	Dimensions (inch)			Style
	Amps	AC	DC	Hz	A	B	C	
F1960	20	277	600	0 - 400	19.38	3.63	3.56	1
F1961	30	277	600	0 - 400	20.13	3.63	3.56	1
F1962	50	277	600	0 - 400	26.50	3.63	3.56	1
F1963	75	277	600	0 - 400	26.50	3.63	3.56	1
F1964	100	277	600	0 - 400	28.88	4.00	4.00	1
F1965	2 x 20	277	600	0 - 400	19.38	7.13	3.56	2
F1966	2 x 30	277	600	0 - 400	20.13	7.13	3.56	2
F1967	2 x 50	277	600	0 - 400	26.50	7.13	3.56	2
F1968	2 x 75	277	600	0 - 400	26.50	7.13	3.56	2
F1969	2 x 100	277	600	0 - 400	28.88	8.00	4.00	2