

098 High Performance Three Phase with Neutral Filters

Up to 100A RoHS



Features

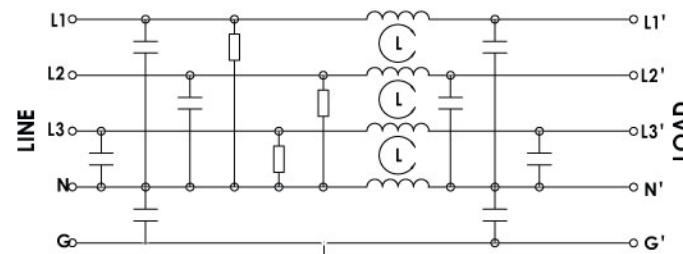
General purpose three phase filters with neutral and safety ground.

Typical Applications

Industrial equipment and other general purpose power equipment with neutral in Y-configuration.

Technical Data

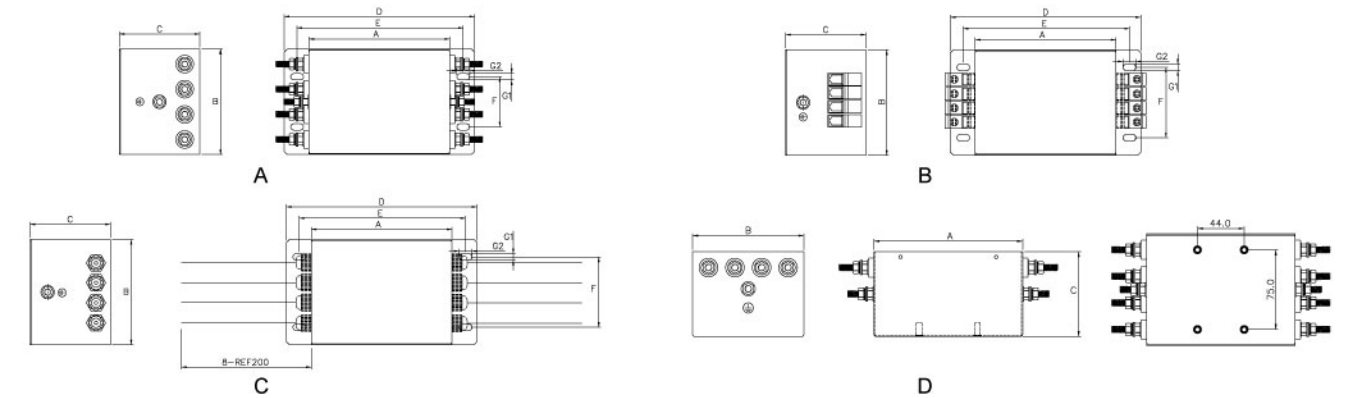
Rated Voltage Max. (V)	520VAC	Leakage Current	
Rated Current (A)	10 - 100A @ 50°C	@ 250 VAC 50Hz	20mA Max
Operating Frequency (Hz)	50 / 60Hz	IP Standard	54
Hipot Rating		Climatic category	25 / 100 / 21
Line to Line	1700V DC		
Line to Ground	2750V DC		
Case	CRS-Plated		



098 - Electrical Schematic

Model No.	Rated Current @ 50°C	Mechanical Diagram	Terminal Options	
			In	Out
098.01001.00	10.0	A/B/C/D	Terminal block/ M4/ Wire leads	Terminal block/ M4/ Wire leads
098.02001.00	20.0	A/B/C/D	Terminal block/ M4/ Wire leads	Terminal block/ M4/ Wire leads
098.02501.00	25.0	A/B/C/D	Terminal block/ M6/ Wire leads	Terminal block/ M6/ Wire leads
098.03001.00	30.0	A/B/C	Terminal block/ M6/ Wire leads	Terminal block/ M6/ Wire leads
098.03501.00	35.0	A/B/C	Terminal block/ M6/ Wire leads	Terminal block/ M6/ Wire leads
098.04001.00	40.0	A/B/C	Terminal block/ M6/ Wire leads	Terminal block/ M6/ Wire leads
098.05001.00	50.0	A/B/C	Terminal block/ M6/ Wire leads	Terminal block/ M6/ Wire leads
098.06001.00	60.0	A/B/C	Terminal block/ M6/ Wire leads	Terminal block/ M6/ Wire leads
098.08001.00	80.0	A/B/C	Terminal block/ M8/ Wire leads	Terminal block/ M8/ Wire leads
098.10001.00	100.0	A/B/C	Terminal block/ M10/ Wire leads	Terminal block/ M10/ Wire leads

098 Mechanical Outlines



098 Mechanical Dimensions (mm) For reference only

Model No.	A	B	C	D	E	F	G
098.01001.00	140.0	105.0	80.0	189.5	165.5	50.0	6.5*13.0/ 4xM5
098.02001.00	140.0	105.0	80.0	189.5	165.5	50.0	6.5*13.0/ 4xM5
098.02501.00	140.0	105.0	80.0	189.5	165.5	50.0	6.5*13.0/ 4xM5
098.03001.00	140.0	120.0	100.0	189.5	165.5	65.0	6.5*13.0
098.03501.00	140.0	120.0	100.0	189.5	165.5	65.0	6.5*13.0
098.04001.00	140.0	120.0	100.0	189.5	165.5	65.0	6.5*13.0
098.05001.00	140.0	120.0	100.0	189.5	165.5	65.0	6.5*13.0
098.06001.00	210.0	160.0	150.0	259.5	230.5	105.0	6.5*13.0
098.08001.00	210.0	160.0	150.0	259.5	230.5	105.0	6.5*13.0
098.10001.00	210.0	160.0	150.0	259.5	230.5	105.0	6.5*13.0

All dimensions in mm, 1 inch=25.4 mm

Insertion Loss in dB measured in a 50Ω system

Model No.	Common Mode IL (Frequencies in MHz)							
	0.05	0.1	0.15	0.5	1.0	5.0	10.0	30.0
098.01001.00	15.0	23.0	21.0	50.0	55.0	80.0	74.0	30.0
098.02001.00	13.0	20.0	25.0	40.0	52.0	67.0	63.0	50.0
098.02501.00	13.0	20.0	25.0	40.0	52.0	67.0	63.0	50.0
098.03001.00	10.0	15.0	19.0	35.0	45.0	68.0	63.0	40.0
098.03501.00	10.0	15.0	19.0	35.0	45.0	68.0	63.0	40.0
098.04001.00	5.0	13.0	17.0	33.0	40.0	65.0	70.0	45.0
098.05001.00	5.0	12.0	15.0	35.0	49.0	67.0	62.0	35.0
098.06001.00	4.0	10.0	18.0	40.0	60.0	60.0	58.0	30.0
098.08001.00	4.0	10.0	18.0	40.0	60.0	60.0	58.0	30.0
098.10001.00	3.0	11.0	20.0	55.0	70.0	55.0	52.0	25.0

Model No.	Differential Mode IL (Frequencies in MHz)							
	0.05	0.1	0.15	0.5	1.0	5.0	10.0	30.0
098.01001.00	27.0	40.0	53.0	80.0	80.0	77.0	70.0	75.0
098.02001.00	30.0	62.0	75.0	80.0	80.0	65.0	66.0	50.0
098.02501.00	30.0	62.0	75.0	80.0	80.0	65.0	66.0	50.0
098.03001.00	25.0	58.0	70.0	75.0	75.0	63.0	69.0	60.0
098.03501.00	25.0	58.0	70.0	75.0	75.0	63.0	69.0	60.0
098.04001.00	20.0	55.0	65.0	80.0	80.0	77.0	80.0	65.0
098.05001.00	23.0	52.0	65.0	80.0	80.0	75.0	75.0	57.0
098.06001.00	35.0	45.0	55.0	70.0	75.0	80.0	80.0	65.0
098.08001.00	35.0	45.0	55.0	70.0	75.0	80.0	80.0	65.0
098.10001.00	36.0	30.0	60.0	70.0	58.0	55.0	50.0	43.0

Other specifications, requirements and customizations can be offered upon request.

LCR Electronics, Inc.

9 South Forest Ave, Norristown, PA 19401.

Tel: +1-610-278-0840 Call: 1-800-LCR4EMC E-mail: sales@lcr-inc.com

LCR ELECTRONICS, INC.
ENGINEERED PRODUCT SOLUTIONS IN A CUSTOMER FOCUSED CULTURE
www.lcr-inc.com