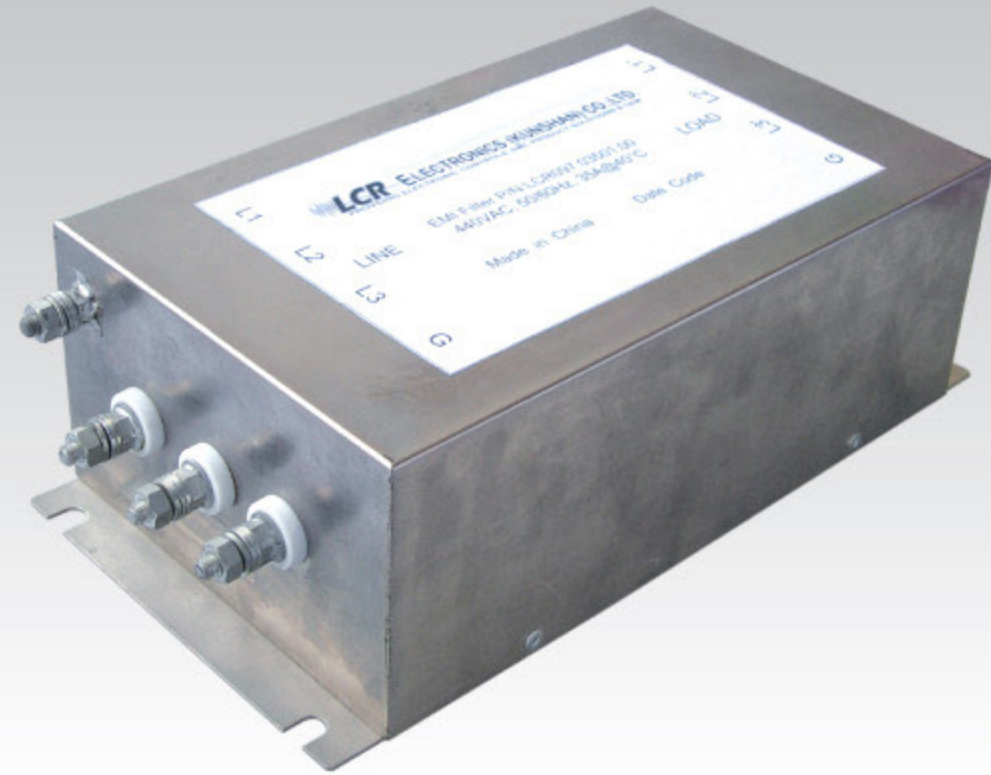


097 High Performance Three-Phase Double Stage Filters

RoHS



Features

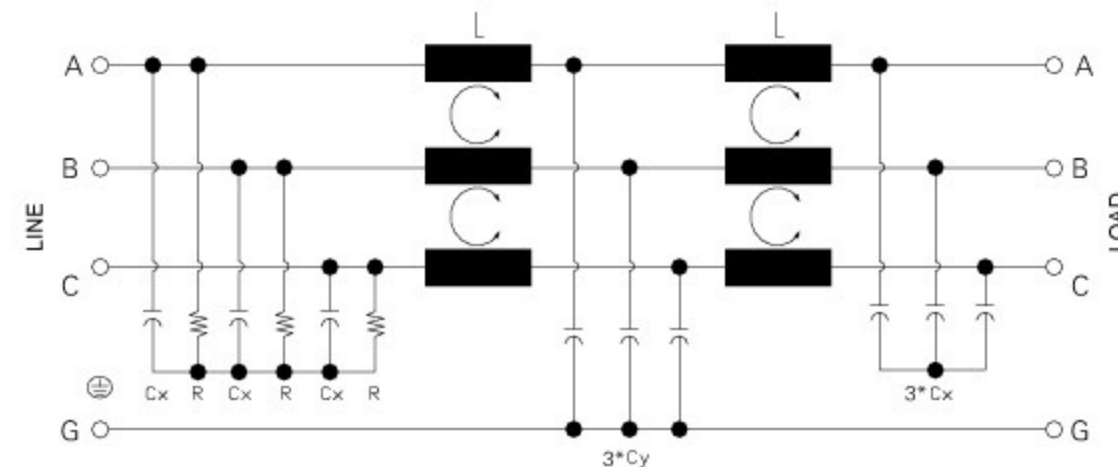
High performance, compact, robust, general purpose, three-phase power line filters.

Typical Applications

Industrial equipment, elevators, escalators, frequency inverter-based controls and equipment.

Technical Data

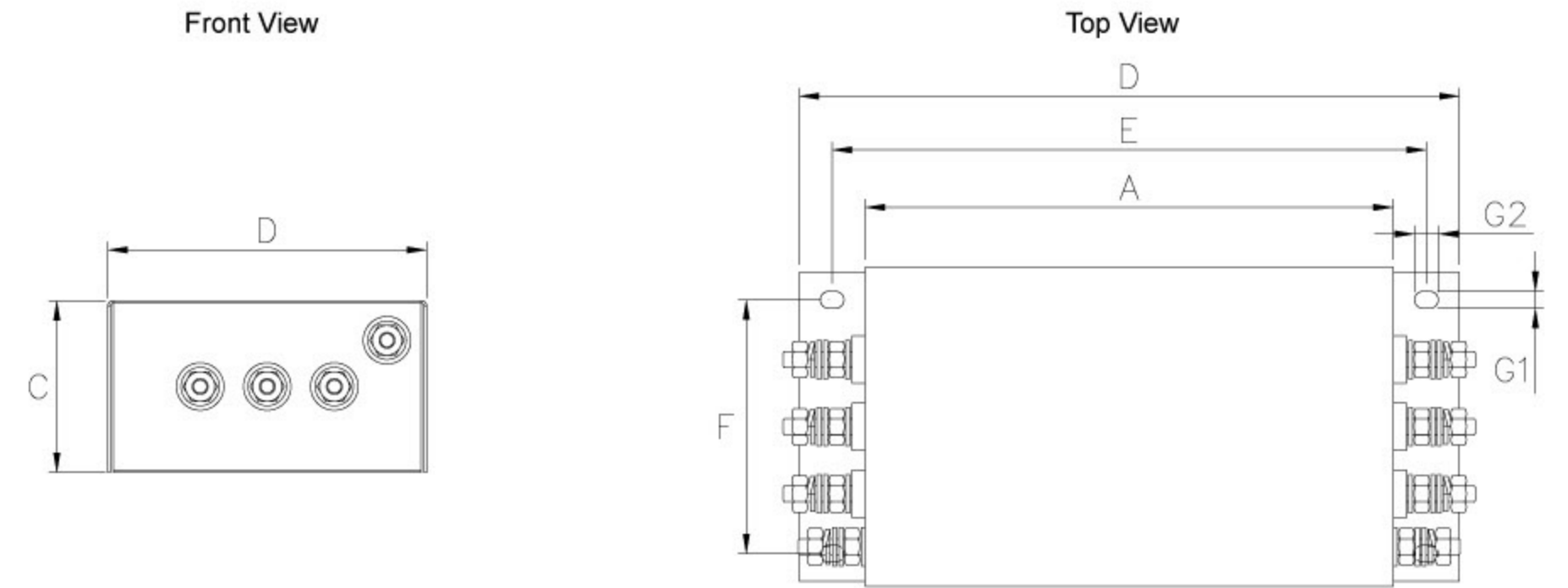
Rated Voltage	440 VAC Max.	Leakage Current	
Rated Current	4-36 A @ 40°C	@ 250 VAC 50 Hz	20 A Max.
Operating Frequency	50/60 Hz	IP Standard	54
Hipot Rating		Climatic category	25/85/21
Line to Line	1450 VDC		
Line to Ground	2250 VDC		
Case	CRS plated		



097 - Electrical Schematic

Model No.	Rated Current @ 40°C	Mechanical Diagram	Terminal Options	
			In	Out
097.00421.00	4.0	A	Terminal Block/ 6.35*0.8/ M4	Terminal Block/ 6.35*0.8/ M4
097.00821.00	8.0	A	Terminal Block/ 6.35*0.8/ M4	Terminal Block/ 6.35*0.8/ M4
097.01621.00	16.0	A	Terminal Block/ 6.35*0.8/ M6	Terminal Block/ 6.35*0.8/ M6
097.02421.00	24.0	A	Terminal Block/ M6	Terminal Block/ M6
097.03621.00	36.0	A	Terminal Block/ M6	Terminal Block/ M6

097 Mechanical Outlines



097 Mechanical Dimensions (mm) For reference only

Model No.	A	B	C	D	E	F	G
097.00421.00	179.3	84.0	57.2	229.0	204.0	60.0	2.3*9.0
097.00821.00	179.3	84.0	57.2	229.0	204.0	60.0	2.3*9.0
097.01621.00	200.0	120.7	65.0	250.0	225.0	96.0	6.4*9.0
097.02421.00	200.0	120.7	65.0	250.0	225.0	96.0	6.4*9.0
097.03621.00	200.0	120.7	65.0	250.0	225.0	96.0	6.4*9.0

All dimensions in mm, 1 inch=25.4 mm

Insertion Loss in dB Measured in a 50Ω System

Model No.	Common Mode IL (Frequencies in MHz)							
	0.05	0.1	0.15	0.5	1.0	5.0	10.0	30.0
097.00421.00	35.0	55.0	65.0	75.0	70.0	57.0	51.0	41.0
097.00821.00	31.0	54.0	65.0	63.0	56.0	42.0	39.0	38.0
097.01621.00	20.0	43.0	55.0	80.0	80.0	78.0	62.0	50.0
097.02421.00	8.0	32.0	41.0	71.0	69.0	53.0	48.0	40.0
097.03621.00	6.0	30.0	40.0	65.0	64.0	50.0	45.0	37.0

Model No.	Differential Mode IL (Frequencies in MHz)							
	0.05	0.1	0.15	0.5	1.0	5.0	10.0	30.0
097.00421.00	18.0	40.0	50.0	80.0	80.0	80.0	74.0	64.0
097.00821.00	9.0	30.0	41.0	70.0	80.0	78.0	74.0	39.0
097.01621.00	12.0	27.0	40.0	70.0	80.0	80.0	79.0	80.0
097.02421.00	15.0	11.0	20.0	65.0	65.0	80.0	80.0	57.0
097.03621.00	15.0	12.0	20.0	63.0	60.0	80.0	80.0	60.0

Other specifications, requirements and customizations can be provided upon request.