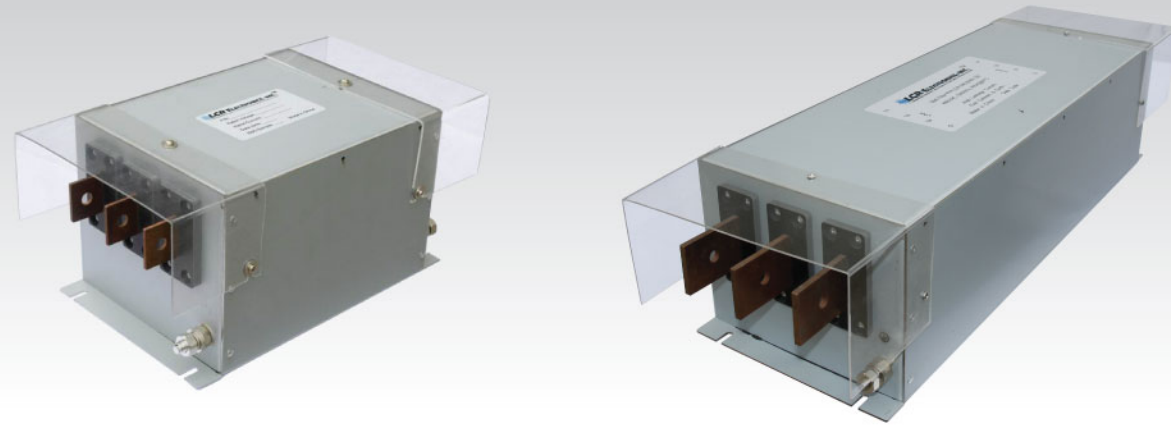


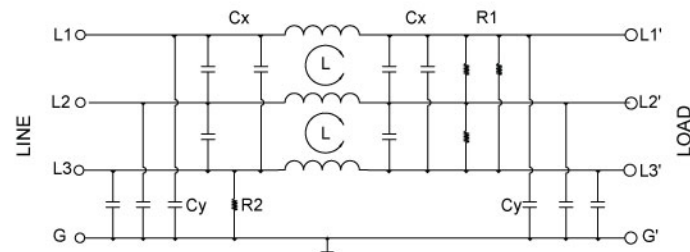
096C 096C High Current High Performance, Three Phase EMI Filters

RoHS



Features

096C Series is a High Power / High Attenuation 3 phase EMI filters Series. This Series is specifically designed for high power applications (250A and above) which requires high attenuation and EMI suppression. It is designed to support those application with high current where the normal low inductance filters can not support and achieve the required suppression and solve the EMI problems.



096C - Electrical Schematic

Typical Applications

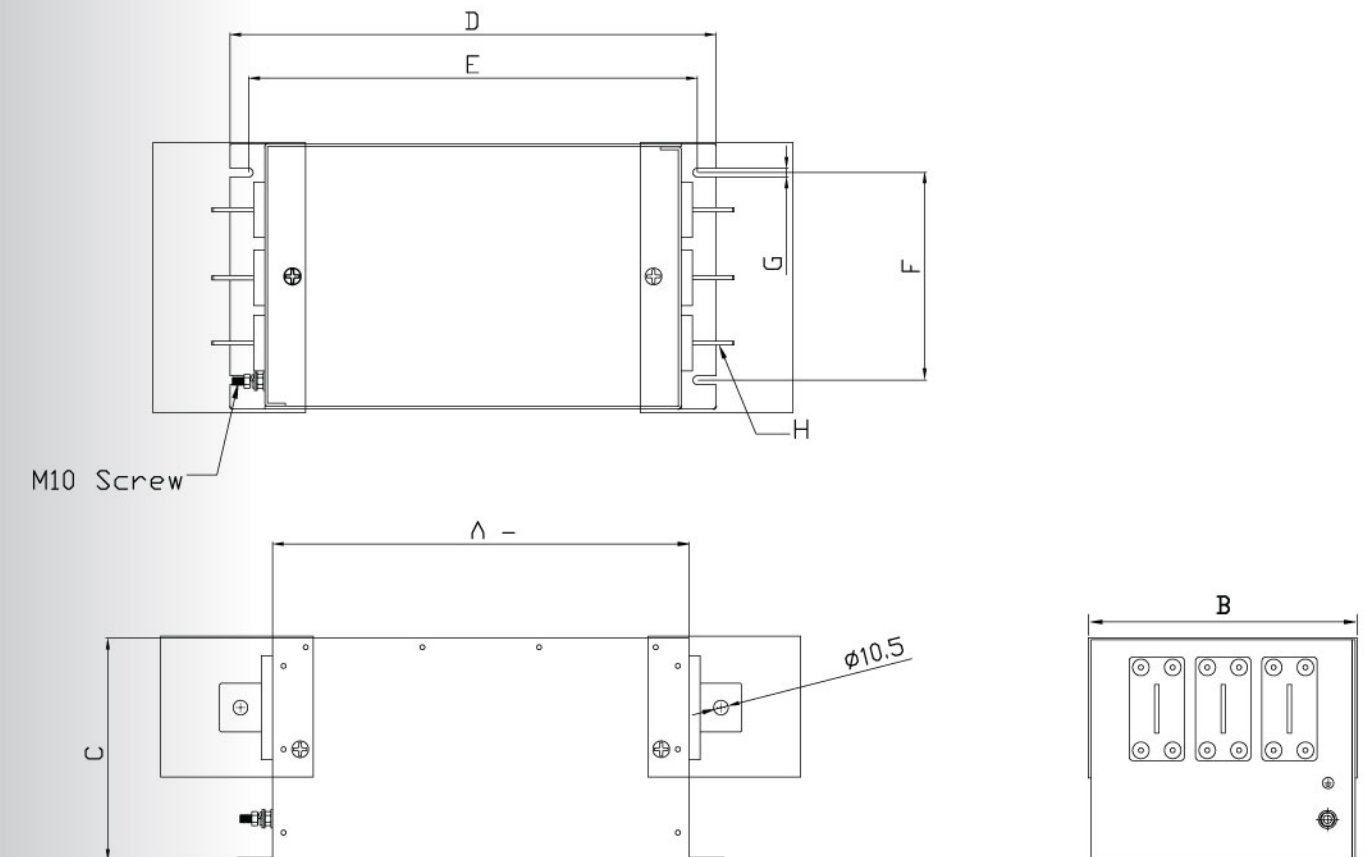
CNC Machines, Injection Molding Machines, Power Grids, Solar and Wind Inverters, Power Stations, Facility Air Condition Systems etc.

Technical Data

Rated Voltage Max.(V)	520 (600) VAC	Climatic category	25 / 100 / 21
Rated Current (A)	250A - 800A@ 50°C	Operating temperature	from -25C to +100C
Over Load (% of rated Current)	150% x 1 min. / hr	Terminals	Copper Bus Bars
	400% x 1sec. / hr.	Cover	PC Clear Protective Cover
Operating Frequency (Hz)	0 - 400Hz.		
Hipot Rating			
Line to Line	2250VDC		
Line to Ground	2800VDC		
IP Class	42		
Case	Plated Steel		
Packing Quantity	1 Pc. per Packaging		

Model No.	Rated Current @ 50°C	Terminal Options	
		In	Out
096C.25001.00	250	Copper Bus Bars	Copper Bus Bars
096C.40001.00	400	Copper Bus Bars	Copper Bus Bars
096C.60001.00	600	Copper Bus Bars	Copper Bus Bars
096C.80001.00	800	Copper Bus Bars	Copper Bus Bars

096C Mechanical Outlines



096C Mechanical Dimensions (mm) For reference purpose only

Model No.	A	B	C	D	E	F	G	H
096C.25001.00	250	190	160	300	273	149.5	6.35(4*)	30*3
096C.40001.00	300	190	160	350	323	149.5	6.35(4*)	30*3
096C.60001.00	500	210	160	550	523	149.5	6.35(4*)	40*5
096C.80001.00	500	210	160	500	523	149.5	6.35(4*)	40*5

1 inch=25.4 mm (All dimensions in mm)

Other specifications, requirements and customizations can be offered upon request.