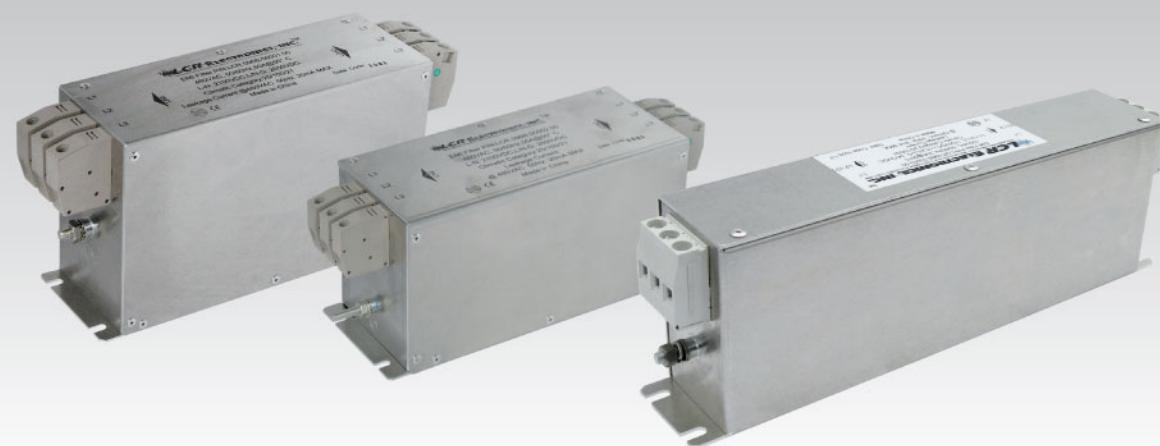


096B Industrial, Compact, Bookshelf Type Three Phase Filters

Up to 100A RoHS

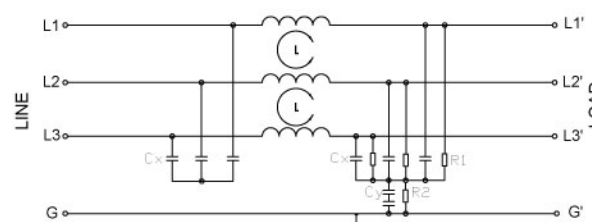


Features

Compact, slim, bookshelf type, high performance three phase filters.

Typical Applications

Industrial equipment, elevators



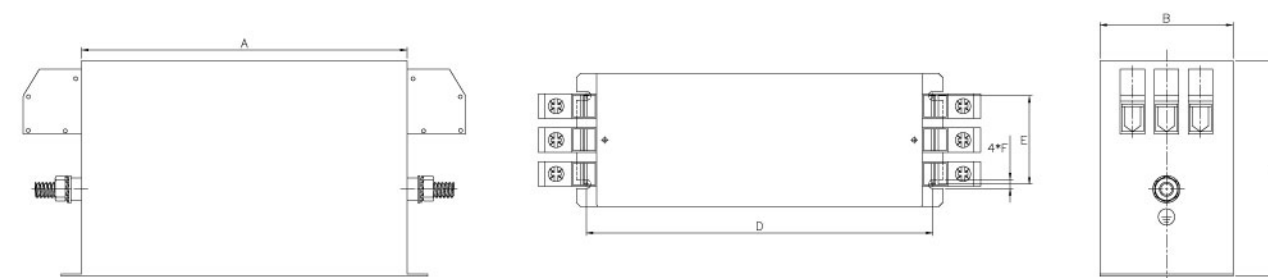
096B - Electrical Schematic

Technical Data

Rated Voltage Max. (V)	520VAC	Leakage Current 096B Series	
Rated Current (A)	7-180A @ 50°C	@ 250 VAC 50Hz	20mA Max.
Operating Frequency (Hz)	50 / 60Hz	IP Standard	42
Hipot Rating		Climatic category	25 / 100 / 21
Line to Line	1450V DC		
Line to Ground	2250V DC		
Case	Plated Steel / Aluminum		

096B Model No.	Rated Current @ 50°C	Mechanical Diagram	Unit Weight (kg)	Terminal Options	
				In	Out
096B.00701.00	7.0	A	1.2	Terminal Block	Terminal Block
096B.01001.00	10.0	A	1.2	Terminal Block	Terminal Block
096B.01601.00	16.0	A	1.5	Terminal Block	Terminal Block
096B.02001.00	20.0	A	1.5	Terminal Block	Terminal Block
096B.03001.00	30.0	A	1.8	Terminal Block	Terminal Block
096B.04001.00	40.0	A	1.8	Terminal Block	Terminal Block
096B.05501.00	55.0	A	2.0	Terminal Block	Terminal Block
096B.08001.00	80.0	A	2.5	Terminal Block	Terminal Block
096B.10001.00	100.0	A	3.5	Terminal Block	Terminal Block
096B.13001.00	130.0	A	3.8	Terminal Block	Terminal Block
096B.15001.00	150.0	A	5.0	Terminal Block	Terminal Block
096B.18001.00	180.0	A	5.0	Terminal Block	Terminal Block

096B Mechanical Outlines



096B Mechanical Dimensions (mm) For reference only

Model No.	A	B	C	D	E	F	Ground Terminal
096B.00701.00	140.0	49.5	70.0	155.0	30.0	5.4	M5
096B.01001.00	140.0	49.5	70.0	155.0	30.0	5.4	M5
096B.01601.00	140.0	49.5	70.0	155.0	30.0	5.4	M5
096B.02001.00	140.0	95.0	95.0	153.5	65.0	5.5	M6
096B.03001.00	140.0	95.0	95.0	153.5	65.0	5.5	M6
096B.04001.00	140.0	95.0	95.0	153.5	65.0	5.5	M6
096B.05501.00	220.0	95.5	113.5	235.0	60.0	5.4	M6
096B.08001.00	240.0	89.5	144.5	254.5	60.0	6.5	M8
096B.10001.00	240.0	94.0	160.0	255.5	65.0	6.5	M10
096B.13001.00	240.0	94.0	160.0	255.5	65.0	6.5	M10
096B.15001.00	240.0	131.5	150.0	255.5	65.0	6.5	M10
096B.18001.00	240.0	131.5	150.0	255.5	65.0	6.5	M10

All dimensions in mm, 1 inch=25.4 mm

Insertion Loss in dB Measured in a 50Ω System

Model No.	Common Mode IL (Frequencies in MHz)								Model No.	Differential Mode IL (Frequencies in MHz)							
	0.05	0.1	0.15	0.5	1.0	5.0	10.0	30.0		0.05	0.1	0.15	0.5	1.0	5.0	10.0	30.0
096B.00701.00	45.0	55.0	65.0	75.0	80.0	70.0	70.0	65.0	096B.00701.00	45.0	55.0	65.0	75.0	80.0	70.0	70.0	65.0
096B.01001.00	45.0	55.0	65.0	75.0	80.0	70.0	70.0	65.0	096B.01001.00	45.0	55.0	65.0	75.0	80.0	70.0	70.0	65.0
096B.01601.00	43.0	55.0	65.0	75.0	80.0	65.0	70.0	65.0	096B.01601.00	43.0	55.0	65.0	75.0	80.0	65.0	70.0	65.0
096B.02001.00	43.0	55.0	65.0	75.0	80.0	65.0	70.0	65.0	096B.02001.00	43.0	55.0	65.0	75.0	80.0	65.0	70.0	65.0
096B.03001.00	40.0	55.0	60.0	75.0	80.0	65.0	65.0	60.0	096B.03001.00	40.0	55.0	60.0	75.0	80.0	65.0	65.0	60.0
096B.04001.00	40.0	55.0	60.0	75.0	80.0	65.0	65.0	60.0	096B.04001.00	40.0	55.0	60.0	75.0	80.0	65.0	65.0	60.0
096B.05501.00	40.0	55.0	60.0	75.0	80.0	55.0	60.0	60.0	096B.05501.00	40.0	55.0	60.0	75.0	80.0	55.0	60.0	60.0
096B.08001.00	35.0	45.0	50.0	70.0	70.0	70.0	55.0	55.0	096B.08001.00	35.0	45.0	50.0	70.0	70.0	70.0	55.0	55.0
096B.10001.00	35.0	40.0	45.0	60.0	65.0	70.0	55.0	55.0	096B.10001.00	35.0	40.0	45.0	60.0	65.0	70.0	55.0	55.0
096B.13001.00	35.0	40.0	45.0	60.0	65.0	70.0	55.0	55.0	096B.13001.00	35.0	40.0	45.0	60.0	65.0	70.0	55.0	55.0
096B.15001.00	30.0	35.0	40.0	55.0	60.0	65.0	50.0	50.0	096B.15001.00	30.0	35.0	40.0	55.0	60.0	65.0	50.0	50.0
096B.18001.00	30.0	35.0	40.0	55.0	60.0	65.0	50.0	50.0	096B.18001.00	30.0	35.0	40.0	55.0	60.0	65.0	50.0	50.0

Other specifications, requirements and customizations can be offered upon request.

LCR Electronics, Inc.

9 South Forest Ave, Norristown, PA 19401.

Tel: +1-610-278-0840 Call: 1-800-LCR4EMC E-mail: sales@lcr-inc.com