

# 096 General Purpose Three-Phase Filters

RoHS



## Features

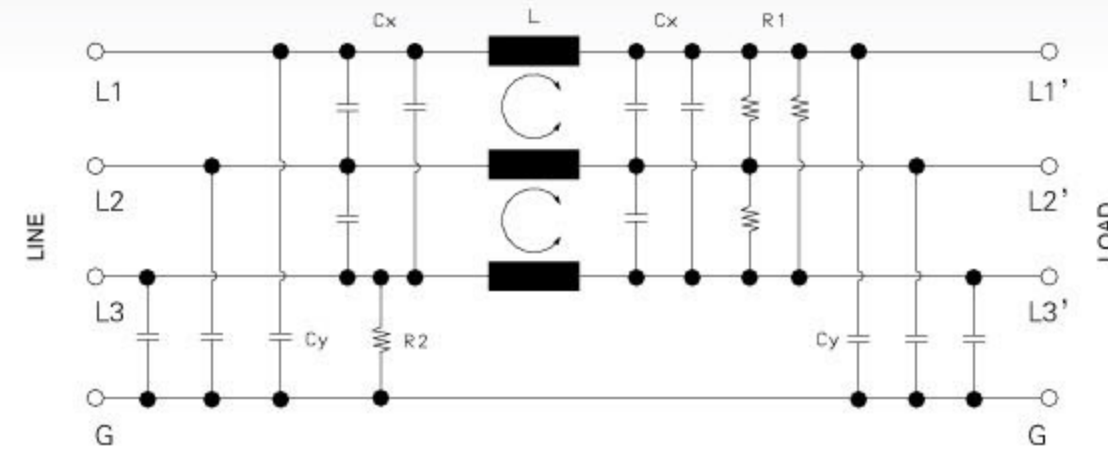
Compact, robust, general purpose, three-phase power line filters.

## Typical Applications

Industrial equipment, elevators, escalators.

## Technical Data

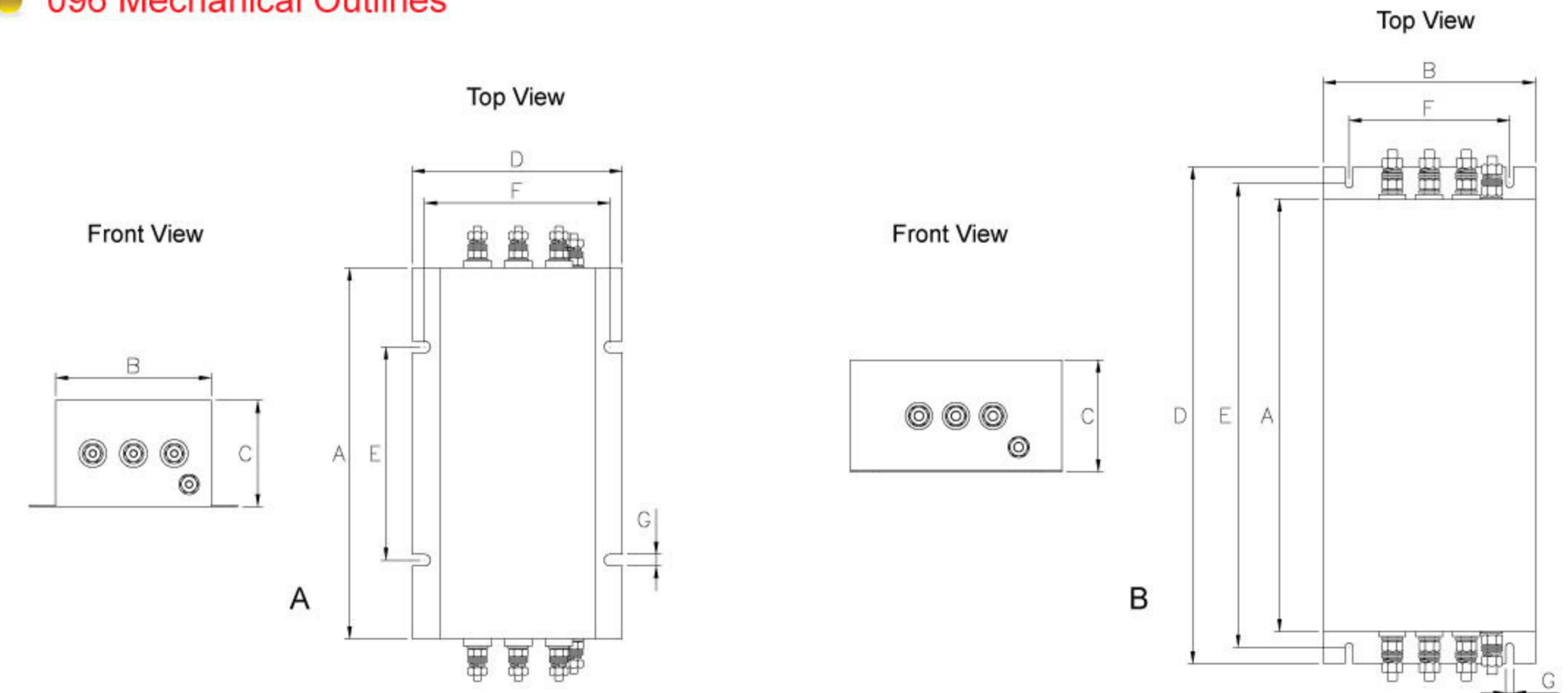
Rated Voltage	440 VAC Max.	Leakage Current	
Rated Current	5-125 A @ 40°C	@ 250 VAC 50 Hz	See table below
Operating Frequency	50/60 Hz	IP Standard	54
Hipot Rating		Climatic category	25/85/21
Line to Line	1450 VDC		
Line to Ground	2250 VDC		
Case	CRS plated		



096 - Electrical Schematic

096 Model No.	Rated Current @ 40°C	Leakage Current (mA)	Mechanical Diagram	Terminal Options	
				In	Out
096.00501.00	5.0	2.0	A	Terminal Block/ 6.35*0.8/ M4	Terminal Block/ 6.35*0.8/ M4
096.00701.00	7.0	2.0	A	Terminal Block/ 6.35*0.8/ M4	Terminal Block/ 6.35*0.8/ M4
096.01001.00	10.0	2.0	A	Terminal Block/ 6.35*0.8/ M4	Terminal Block/ 6.35*0.8/ M4
096.01501.00	15.0	2.5	A	Terminal Block/ 6.35*0.8/ M4	Terminal Block/ 6.35*0.8/ M4
096.02501.00	25.0	28.0	A	Terminal Block/ M6	Terminal Block/ M6
096.03501.00	35.0	28.0	A	Terminal Block/ M6	Terminal Block/ M6
096.04501.00	45.0	30.0	A	Terminal Block/ M6	Terminal Block/ M6
096.06001.00	60.0	30.0	B	Terminal Block/ M8	Terminal Block/ M8
096.07501.00	75.0	32.0	B	Terminal Block/ M8	Terminal Block/ M8
096.09001.00	90.0	32.0	B	Terminal Block/ M10	Terminal Block/ M10
096.10001.00	100.0	41.0	B	Terminal Block/ M10	Terminal Block/ M10
096.12501.00	125.0	41.0	B	Terminal Block/ M10	Terminal Block/ M10

## 096 Mechanical Outlines



## 096 Mechanical Dimensions (mm) For reference only

Model No.	A	B	C	D	E	F	G
096.00501.00	179.3	84.0	57.2	114.3	115.0	99.8	6.35
096.00701.00	179.3	84.0	57.2	114.3	115.0	99.8	6.35
096.01001.00	199.9	120.7	65.0	149.1	115.0	135.9	6.35
096.01501.00	199.9	120.7	65.0	149.1	115.0	135.9	6.35
096.02501.00	199.9	120.7	65.0	149.1	115.0	135.9	6.35
096.03501.00	199.9	120.7	65.0	149.1	115.0	135.9	6.35
096.04501.00	199.9	120.7	65.0	149.1	115.0	135.9	6.35
096.06001.00	350.0	171.5	90.4	400.1	373.1	130.0	6.35
096.07501.00	350.0	171.5	90.4	400.1	373.1	130.0	6.35
096.09001.00	350.0	171.5	90.4	400.1	373.1	130.0	6.35
096.10001.00	350.0	171.5	90.4	400.1	373.1	130.0	6.35
096.12501.00	350.0	171.5	90.4	400.1	373.1	130.0	6.35

All dimensions in mm, 1 inch=25.4 mm

## Insertion Loss in dB Measured in a 50Ω System

Model No.	Common Mode IL (Frequencies in MHz)								Model No.	Differential Mode IL (Frequencies in MHz)							
	0.05	0.1	0.15	0.5	1.0	5.0	10.0	30.0		0.05	0.1	0.15	0.5	1.0	5.0	10.0	30.0
096.00501.00	35.0	45.0	50.0	70.0	70.0	70.0	65.0	65.0	096.00501.00	10.0	20.0	23.0	30.0	40.0	50.0	50.0	50.0
096.00701.00	30.0	40.0	50.0	70.0	70.0	70.0	65.0	65.0	096.00701.00	10.0	20.0	23.0	30.0	40.0	50.0	50.0	50.0
096.01001.00	30.0	40.0	50.0	70.0	70.0	70.0	65.0	65.0	096.01001.00	10.0	20.0	23.0	30.0	40.0	50.0	50.0	50.0
096.01501.00	45.0	55.0	60.0	75.0	80.0	80.0	65.0	65.0	096.01501.00	15.0	20.0	25.0	35.0	45.0	55.0	50.0	50.0
096.02501.00	40.0	55.0	60.0	75.0	80.0	80.0	65.0	65.0	096.02501.00	15.0	20.0	25.0	35.0	45.0	55.0	50.0	50.0
096.03501.00	40.0	55.0	60.0	75.0	80.0	80.0	65.0	65.0	096.03501.00	20.0	25.0	30.0	40.0	50.0	60.0	55.0	55.0
096.04501.00	40.0	50.0	55.0	70.0	75.0	75.0	60.0	60.0	096.04501.00	20.0	25.0	30.0	40.0	50.0	60.0	55.0	55.0
096.06001.00	35.0	45.0	50.0	70.0	70.0	70.0	55.0	55.0	096.06001.00	25.0	30.0	35.0	45.0	50.0	60.0	55.0	55.0
096.07501.00	35.0	45.0	50.0	70.0	70.0	70.0	55.0	55.0	096.07501.00	25.0	30.0	35.0	45.0	50.0	60.0	55.0	55.0
096.09001.00	35.0	45.0	50.0	70.0	70.0	70.0	55.0	55.0	096.09001.00	25.0	30.0	35.0	45.0	50.0	60.0	55.0	55.0
096.10001.00	30.0	40.0	45.0	60.0	65.0	70.0	55.0	55.0	096.10001.00	25.0	30.0	35.0	45.0	50.0	60.0	55.0	55.0
096.12501.00	30.0	40.0	45.0	60.0	65.0	70.0	55.0	55.0	096.12501.00	25.0	30.0	35.0	45.0	50.0	60.0	55.0	55.0

Other specifications, requirements and customizations can be provided upon request.