

# 096 General Purpose Three Phase Filters

**RoHS** Up to 100A



## Features

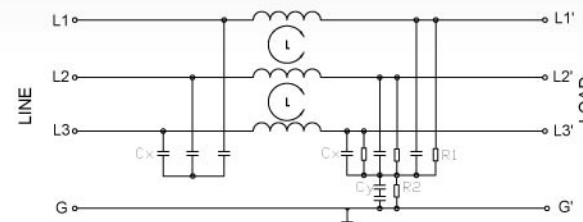
Compact, robust, general purpose three phase power line filters.

## Typical Applications

Industrial equipment, elevators, escalators and any other general purpose three phase applications

## Technical Data

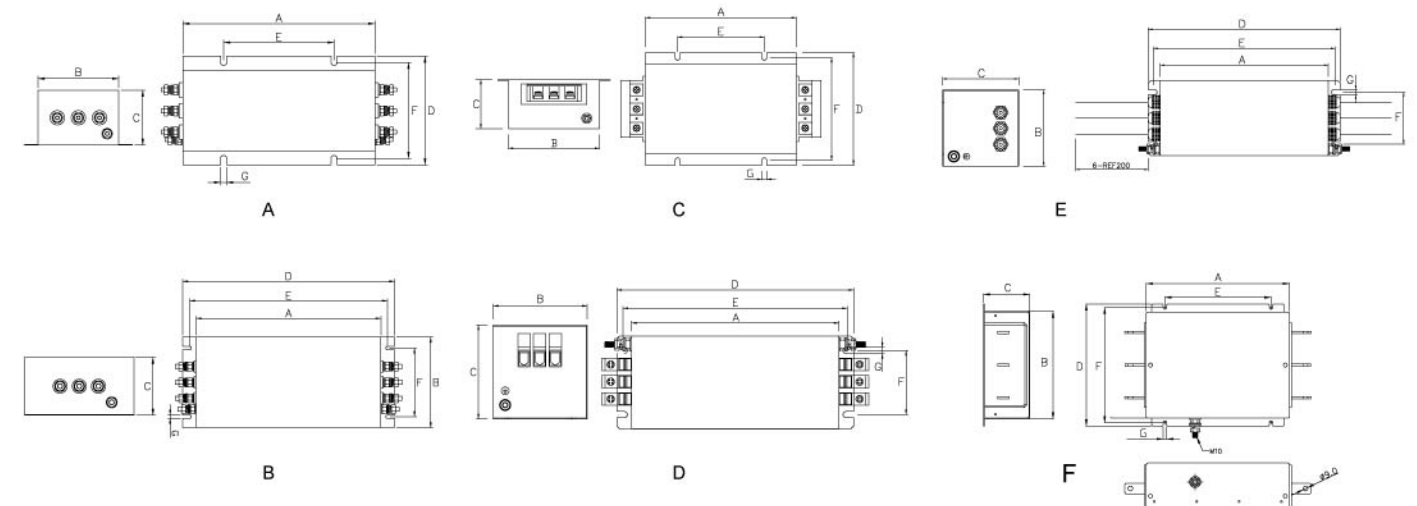
Rated Voltage Max. (V)	520VAC	Leakage Current	
Rated Current (A)	5 - 600A @ 50°C	@ 250 VAC 50Hz	See table below
Operating Frequency (Hz)	50 / 60Hz	IP Standard	54
Hipot Rating		Climatic category	25 / 100 / 21
Line to Line	1450V DC		
Line to Ground	2250V DC		
Case	CRS-Ni Plated		



096 - Electrical Schematic

096 Model No.	Rated Current @ 50°C	Leakage Current(mA)	Mechanical Diagram	Terminal Options	
				In	Out
096.00501.00	5.0	2	A	Terminal block/M4/Wire leads	Terminal block/M4/Wire leads
096.01001.00	10.0	2	A/B/C/D/E	Terminal block/M4/Wire leads	Terminal block/M4/Wire leads
096.01501.00	15.0	2.5	A/B/C/D/E	Terminal block/M4/Wire leads	Terminal block/M4/Wire leads
096.02501.00	25.0	28	A/B/C/D/E	Terminal block/M5/Wire leads	Terminal block/M5/Wire leads
096.03501.00	35.0	28	A/B/C/D/E	Terminal block/M6/Wire leads	Terminal block/M6/Wire leads
096.04501.00	45.0	30	A/B/C/D/E	Terminal block/M6/Wire leads	Terminal block/M6/Wire leads
096.06001.00	60.0	30	B/C/D/E	Terminal block/M8/Wire leads	Terminal block/M8/Wire leads
096.07501.00	75.0	32	B/C/D/E	Terminal block/M8/Wire leads	Terminal block/M8/Wire leads
096.09001.00	90.0	32	B/C/D/E	Terminal block/M10/Wire leads	Terminal block/M10/Wire leads
096.10001.00	100.0	41	B/C/D/E	Terminal block/M10/Wire leads	Terminal block/M10/Wire leads
096.12501.00	125.0	41	B/C/D/E	Terminal block/M10/Wire leads	Terminal block/M10/Wire leads
096.25001.00	250.0	50	F	20x3 Copper bus bar	20x3 Copper bus bar
096.40001.00	400.0	50	F	20x4 Copper bus bar	20x4 Copper bus bar
096.60001.00	600.0	50	F	25x5 Copper bus bar	25x5 Copper bus bar
096.80001.00	800.0	50	F	40x5 Copper bus bar	40x5 Copper bus bar

## 096 Mechanical Outlines



## 096 Mechanical Dimensions (mm) For reference only

Model No.	A	B	C	D	E	F	G
096.00501.00	179.3	84.0	57.2	114.3	115.0	99.8	6.35
096.01001.00	199.9	120.7	65.0	149.1	115.0	135.9	6.35
096.01501.00	199.9	120.7	65.0	149.1	115.0	135.9	6.35
096.02501.00	199.9	120.7	65.0	149.1	115.0	135.9	6.35
096.03501.00	199.9	120.7	65.0	149.1	115.0	135.9	6.35
096.04501.00	199.9	120.7	65.0	149.1	115.0	135.9	6.35
096.06001.00	350.0	171.5	90.4	400.1	373.1	130.0	6.35
096.07501.00	350.0	171.5	90.4	400.1	373.1	130.0	6.35
096.09001.00	350.0	171.5	90.4	400.1	373.1	130.0	6.35
096.10001.00	350.0	171.5	90.4	400.1	373.1	130.0	6.35
096.12501.00	350.0	171.5	90.4	400.1	373.1	130.0	6.35
096.25001.00	240.0	200.0	86.0	300.0	275.0	154.0	6.5
096.40001.00	270.0	200.0	86.0	230.0	200.0	217.0	6.5
096.60001.00	350.0	250.0	120.0	280.0	250.0	267.0	6.5
096.80001.00	350.0	250.0	120.0	280.0	250.0	267.0	6.5

All dimensions in mm, 1 inch=25.4 mm

## Insertion Loss in dB measured in a 50Ω system

Model No.	Common Mode (Frequencies in MHz)								Model No.	Differential Mode (Frequencies in MHz)							
	0.05	0.1	0.15	0.5	1.0	5.0	10.0	30.0		0.05	0.1	0.15	0.5	1.0	5.0	10.0	30.0
096.00501.00	35.0	45.0	50.0	70.0	70.0	70.0	65.0	65.0	096.00501.00	10.0	20.0	23.0	30.0	40.0	50.0	50.0	50.0
096.01001.00	30.0	40.0	50.0	70.0	70.0	70.0	65.0	65.0	096.01001.00	10.0	20.0	23.0	30.0	40.0	50.0	50.0	50.0
096.01501.00	45.0	55.0	60.0	75.0	80.0	80.0	65.0	65.0	096.01501.00	15.0	20.0	25.0	35.0	45.0	55.0	50.0	50.0
096.02501.00	40.0	55.0	60.0	75.0	80.0	80.0	65.0	65.0	096.02501.00	15.0	20.0	25.0	35.0	45.0	55.0	50.0	50.0
096.03501.00	40.0	55.0	60.0	75.0	80.0	80.0	65.0	65.0	096.03501.00	20.0	25.0	30.0	40.0	50.0	60.0	55.0	55.0
096.04501.00	40.0	50.0	55.0	70.0	75.0	75.0	60.0	60.0	096.04501.00	20.0	25.0	30.0	40.0	50.0	60.0	55.0	55.0
096.06001.00	35.0	45.0	50.0	70.0	70.0	70.0	55.0	55.0	096.06001.00	25.0	30.0	35.0	45.0	50.0	60.0	55.0	55.0
096.07501.00	35.0	45.0	50.0	70.0	70.0	70.0	55.0	55.0	096.07501.00	25.0	30.0	35.0	45.0	50.0	60.0	55.0	55.0
096.09001.00	35.0	45.0	50.0	70.0	70.0	70.0	55.0	55.0	096.09001.00	25.0	30.0	35.0	45.0	50.0	60.0	55.0	55.0
096.10001.00	30.0	40.0	45.0	60.0	65.0	70.0	55.0	55.0	096.10001.00	25.0	30.0	35.0	45.0	50.0	60.0	55.0	55.0
096.12501.00	30.0	40.0	45.0	60.0	65.0	70.0	55.0	55.0	096.12501.00	25.0	30.0	35.0	45.0	50.0	60.0	55.0	55.0
096.25001.00	13.0	17.0	20.0	37.0	41.0	36.0	28.0	26.0	096.25001.00	21.0	27.0	32.0	46.0	55.0	48.0	38.0	34.0
096.40001.00	13.0	17.0	20.0	37.0	41.0	36.0	28.0	26.0	096.40001.00	21.0	27.0	32.0	46.0	55.0	48.0	38.0	34.0
096.60001.00	13.0	17.0	20.0	37.0	41.0	36.0	28.0	26.0	096.60001.00	21.0	27.0	32.0	46.0	55.0	48.0	38.0	34.0
096.80001.00	13.0	17.0	20.0	37.0	41.0	36.0	28.0	26.0	096.80001.00	21.0	27.0	32.0	46.0	55.0	48.0	38.0	34.0

Other specifications, requirements and customizations can be offered upon request.

**LCR Electronics, Inc.**

9 South Forest Ave, Norristown, PA 19401.

Tel: +1-610-278-0840 Call: 1-800-LCR4EMC E-mail: sales@lcr-inc.com